

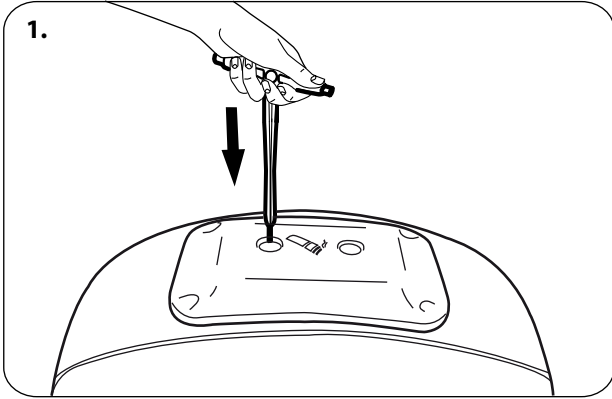
# STREAMLINE JUBILEE™ BIN

## ASHTRAY OPERATION INSTRUCTIONS

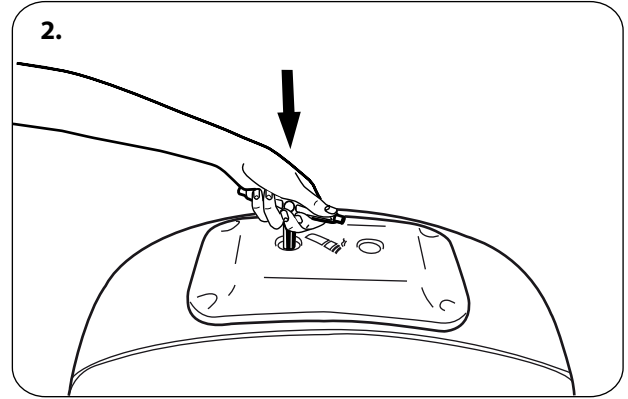
**NOTE:** Ensure that all relevant personnel read the points listed within this leaflet and that a copy is given to staff involved with the operation and maintenance of this product.

### EMPTYING SEQUENCE

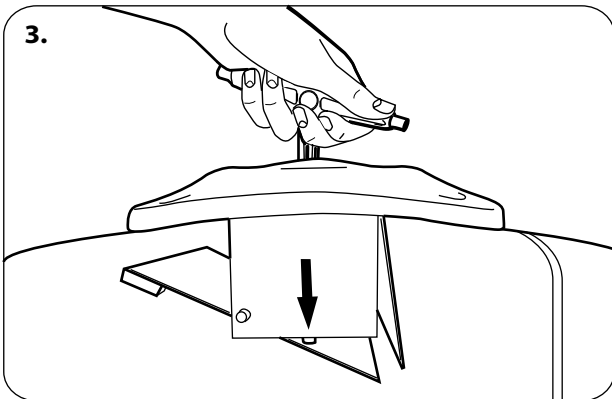
The ashtray must only be emptied when the liner of the bin is also being emptied for collection.



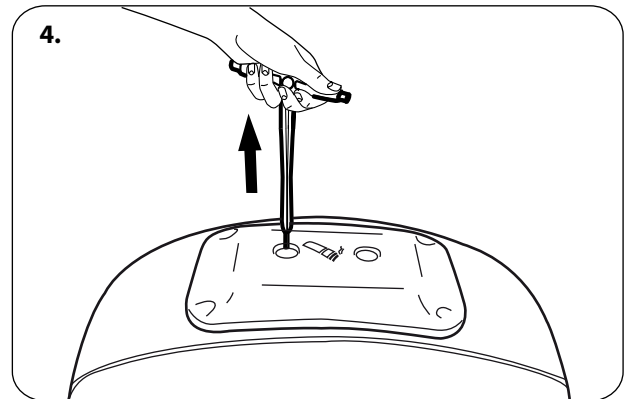
To empty the ashtray insert the plunger into one of the holes.



Push the plunger down through the aperture.



The plunger will push the trapdoor open to empty the ashtray's contents into the main liner of the litter bin.



Pull the plunger upwards to allow the ashtray trapdoor to close automatically.



### IMPORTANT SAFETY NOTE:

**FOR SAFE OPERATION ENSURE ASHTRAY BASE FLAP IS FREE FROM DEBRIS AND FULLY CLOSED AFTER EMPTYING**



### CLEANING

To ensure smooth operation the undercarriage of the ashtray should be cleaned regularly, particularly around the hinge, to ensure that no ash or grime hinders the mechanism.

We recommend a soft brush and water with mild detergent.